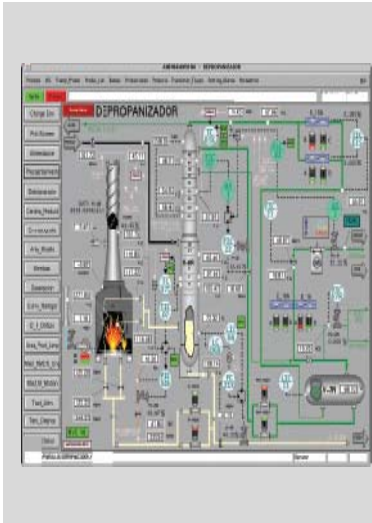


# Development of a Custom Technician Training Program for a Major Food & Beverage Manufacturer

**MAVERICK created a custom training program tailored specifically for a customer's standardized control standards to enable technicians to use the resources of the control system in order to improve controllability and maximize their effectiveness.**



## Main Objective

The purpose of this effort was to develop a comprehensive training package which would allow the individual plant locations to send their E&I technicians and/or operators to MAVERICK's world class training facility for custom application training. The training would not only include the programming software in use, but also the latest PLC and HMI development standards in place.

## Customer Results

MAVERICK successfully developed a three day training course specifically tailored to the needs of the customer, exceeding their expectations. The training program, which has been in use for numerous years, addresses maintenance, operator, and process engineering areas. At its inception, roughly thirty engineers/technicians/operators from seven different plant locations participated in the initial training sessions. The initial training sessions were also recorded for future use as refresher material.

## Application Description

The training program covered the following areas:

- **Narrative Standards:** How-to guide and templates, linking Excel tables to Word, and appropriate formatting per the latest standard.
- **PLC Development:** Overview of Add-On instructions and the benefits of using them, brief overview of using the ControlLogix programming software, device logic, alarming, pipe animation, and a tips/tricks segment specific to PLC logic.
- **HMI Background/Installation:** HMI standard structure, differences of individual server/client functionalities, communication configuration, how to import an application, installation procedure for servers and clients, finding and installing software patches and configuring server redundancy.
- **HMI Development:** Overview of how to use the FactoryTalk View programming software, how to add new process screens, how to add devices and associated animation, overview of alarm summary, overview of pipe animation, and how to utilize FactoryTalk diagnostics tools.
- **Hands-On Lab:** Written quiz which reviews the areas discussed above, review of answers after completion, hands-on practice troubleshooting/revising a PLC application according to supplied documentation, troubleshooting/revising an HMI application according to supplied documentation, and how to test and verify the application.

## The MAVERICK Difference

To paraphrase the customer – “... went from knowing very little in terms of controls to supporting a large scale startup effort almost single-handedly. The additional remote support MAVERICK offered only made it that much easier.”